

HDMI Camera

You can achieve advanced imaging capabilities using CVE's HDMI camera combined with adjustable cross-hairs for extra precision. The camera is fully integrated with our user-friendly, PC-based, CNC controlled human machine interface (HMI) with data logging and recipe storage.

Benefits of the HDMI camera include:



Adjustable cross-hair feature

Calibration tool for accurate line, shape, and area measurement



Auto-focus and zoom capability

Up to 10x magnification



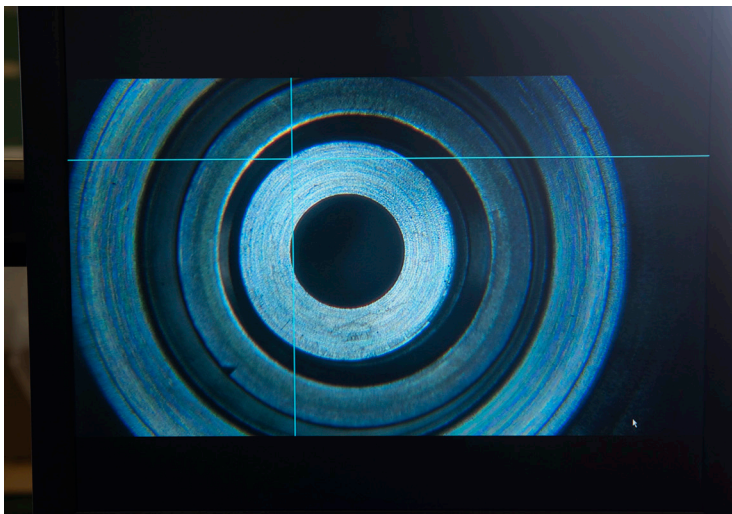
Image and video capture

Fully exportable to your preferred format

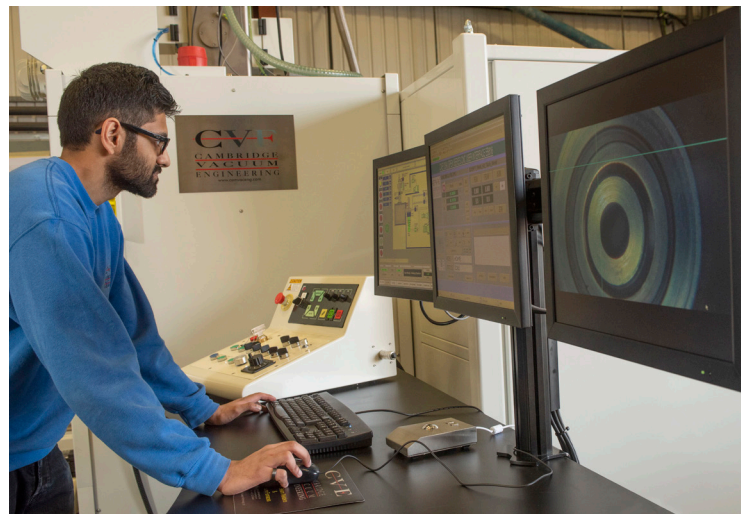


HDMI quality

Viewing of intense welding



HDMI camera with cross-hairs



Integration with HMI

Backscattered Electron Imaging

The backscattered electron imaging feature works by scanning a beam in a raster pattern to generate a backscattered image of an area - like what scanning electron microscope (SEM) produces.



High-resolution images

Create high-resolution images allowing for better examination of surface layers



Conventional HDMI image



Backscattered electron image

USA

Cambridge Vacuum Engineering Inc.
Unit 7 630, Silver Street
Agawam
Massachusetts
01001-0867
United States of America

+1 (413) 789 4600

UK Headquarters

Cambridge Vacuum Engineering
Pembroke Avenue
Waterbeach
Cambridge
CB25 9QX
United Kingdom

+44 (0) 1223 863481

China

Aquasium Technology (Beijing) Co. Ltd
Suite 5, East Tower, 10th Floor
B12 Jianguomenwai Avenue
Beijing
100022
People's Republic of China

+86 (10) 512 25102



E-mail: sales@camvaceng.com
Web: www.camvaceng.com

© Aquasium Technology Limited trading
as Cambridge Vacuum Engineering