



60kV Electron Beam Welder

TURBOCHARGER MODELS

 Passenger car and commercial diesel applications

 Manual or robot loading



TW Model

Equipment, Features and Options

Standard Equipment

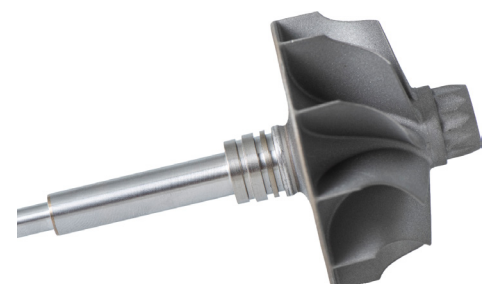
- > Automatic beam alignment and filament heating
- > Beam deflection patterns and function generator
- > Ethernet hub for remote diagnostics
- > High-quality HDMI camera and vision system
- > HMI for recipe storage and data logging
- > Industrial PLC with PC-based
- > Separately pumped gun column

Advanced Features and Options

- > Automatic joint finding option using back scattered electrons
- > Directly heated cathode with high-intensity beam for low distortion
- > Light guard protection of the loading area
- > MES and industry 4.0 compatibility
- > Plain tooling housing for self-aligning parts and dual drive tooling housing option for centring
- > Pneumatic tail-stock
- > Quick change tooling



NG Model

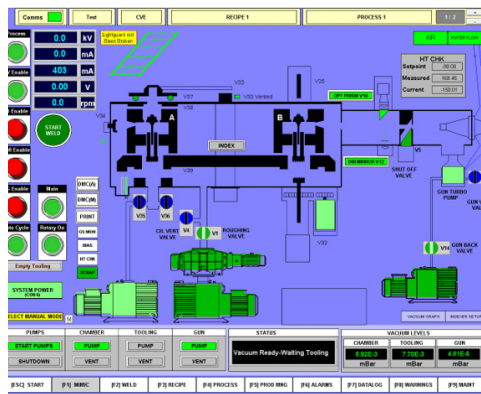


Shaft and wheel

Specification

	TW Model	NG Model	SP Model
Typical takt time*	30-35s	20-22s	15-18s
Dual drive tooling housing Maximum wheel size	A up to 53mm B 50-82mm C 80-105mm	Up to 53mm	Up to 53mm
Plain tooling housing	Up to 120mm	Up to 65mm	Up to 65mm

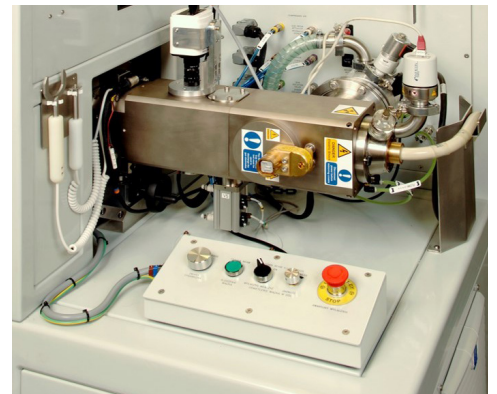
*Dependent on weld recipe, shaft diameter and joint finding option



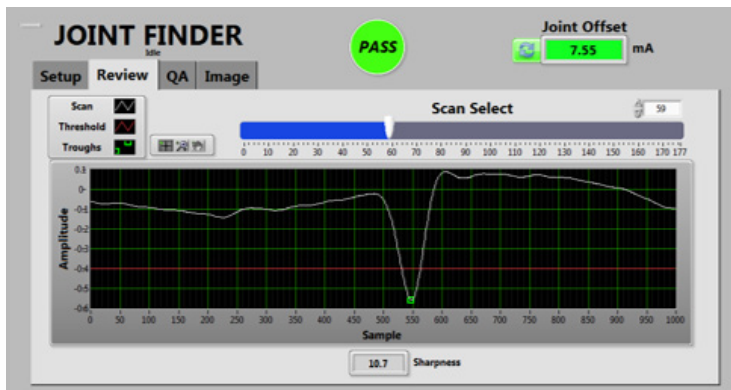
PC-based HMI with data log to hard drive and remote diagnostics via ethernet hub



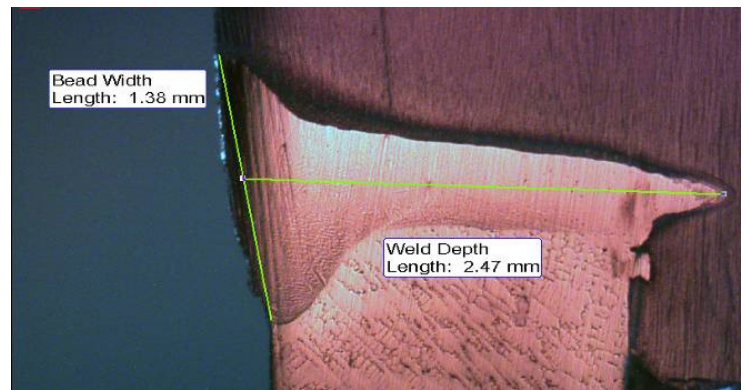
Dual drive tooling housing, shaft adapter and wheel collet



D60LN gun column with filament alignment system and turbo-molecular pump



Automatic joint finder



Weld cross-section

USA

Cambridge Vacuum Engineering Inc.
Unit 7 630, Silver Street
Agawam
Massachusetts
01001-0867
United States of America

+1 (413) 789 4600

UK Headquarters

Cambridge Vacuum Engineering
Pembroke Avenue
Waterbeach
Cambridge
CB25 9QX
United Kingdom

+44 (0) 1223 863481

China

Aquasium Technology (Beijing) Co. Ltd
No.2-1008, 9/F, Building 8, Compound
No.87, West Jiancaicheng Road,
Changping District, Beijing
100096
People's Republic of China



E-mail: sales@camvaceng.com
Web: www.camvaceng.com

© Aquasium Technology Limited trading as Cambridge Vacuum Engineering