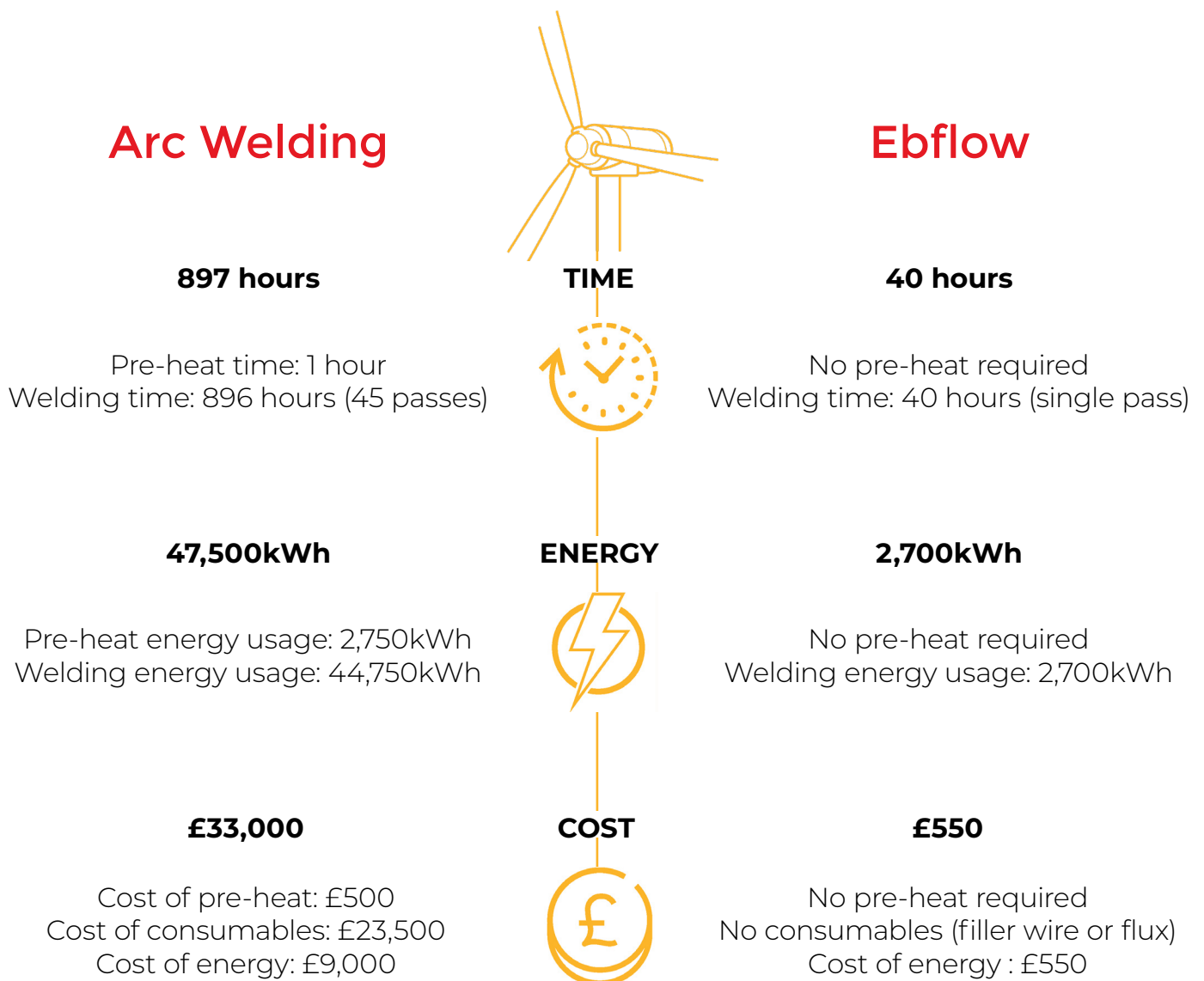


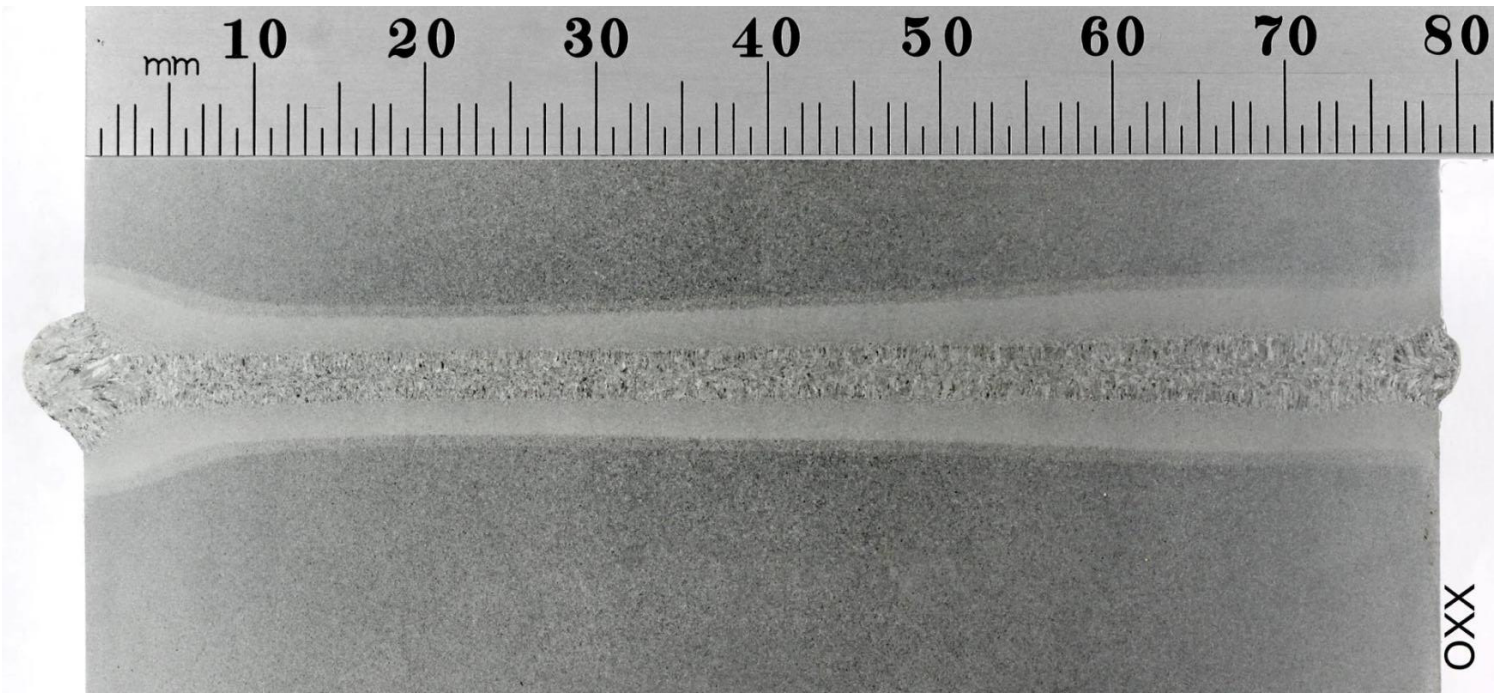
**Transform Your Economy and Productivity**

Ebflow is a superior and completely revolutionary reduced pressure electron beam (RPEB) welding technology, establishing and maintaining a local vacuum only where it is needed. This means that Ebflow can be operated on-site and applied to large structures.

**Offshore Wind Applications**

Ebflow can reduce the time needed to weld a monopile by 95%, whilst being 94% more energy-efficient, resulting in a 98% overall cost reduction - compared to traditional submerged arc welding (SAW) - based on a typical specification of a 60 metre long, 8 metre diameter monopile, with a wall thickness of 80mm.





80mm thick S335 full penetration weld, completed in a single pass, at a 125mm/min feed rate



Ebflow machine on-site

**USA**

Cambridge Vacuum Engineering Inc.  
Unit 7 630, Silver Street  
Agawam  
Massachusetts  
01001-0867  
United States of America

+1 (413) 789 4600



**UK Headquarters**

Cambridge Vacuum Engineering  
Pembroke Avenue  
Waterbeach  
Cambridge  
CB25 9QX  
United Kingdom

+44 1223 863481

E-mail: [sales@camvaceng.com](mailto:sales@camvaceng.com)  
Web: [www.camvaceng.com](http://www.camvaceng.com)

**China**

Aquasium Technology (Beijing) Co. Ltd  
Suite 5, East Tower, 10th Floor  
B12 Jianguomenwai Avenue  
Beijing  
100022  
People's Republic of China

+86 (10) 512 25102

© Aquasium Technology Limited trading  
as Cambridge Vacuum Engineering