



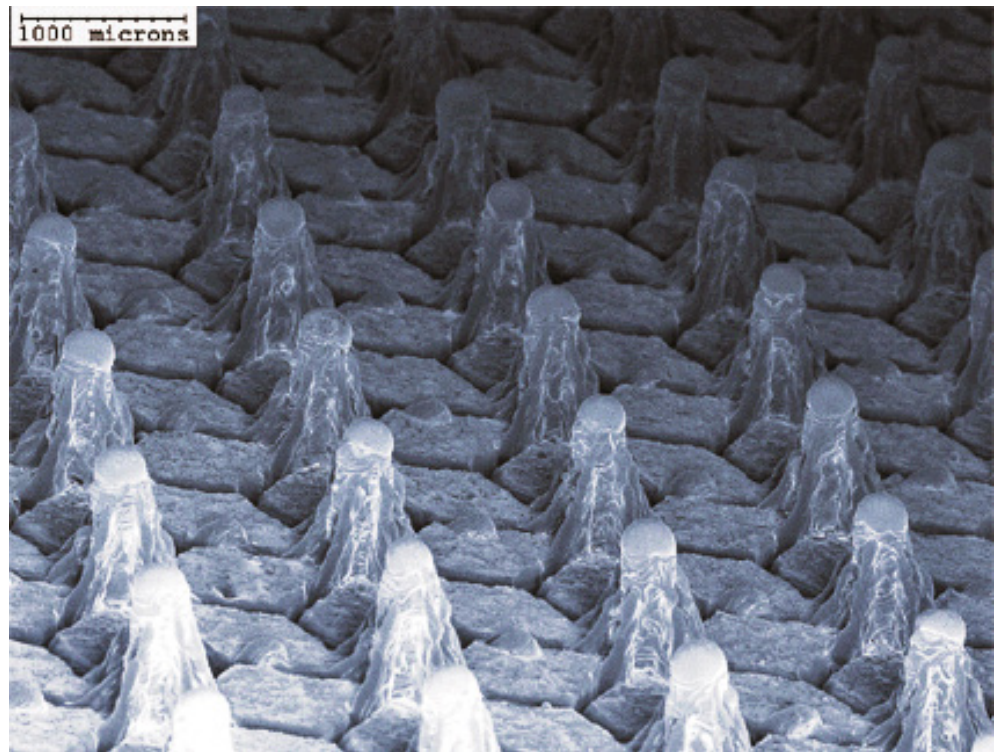
Materials processing technology



Surface modification using an electron beam



Industrial applications



What is Surfi-Sculpt?

Surfi-sculpt is a materials processing technology that manipulates an electron beam to modify surface textures so that they are more useful and efficient in industrial applications – such as for enhanced bonding of composites to metal.

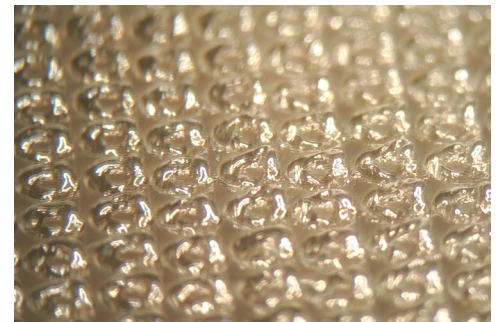
Surfi-sculpt is applicable to a wide range of situations, projects, and materials, with the ability to create a variety of hole and slot patterns.

Computer software controls the location of the elements precisely and repeatably, making it a suitable process for manufacturing high-volume and value components, with the capacity to form several hundred features in less than 10 seconds.

The process is highly flexible, offering the opportunity to design customised features in most industries, including medical, adhesive, and hydrodynamic applications.

Surfi-sculpt works by melting substrate material using the heating action of the beam and then displacing material using the combined effects of temperature-variant surface tension and vapour pressure at the point of action of the beam. This process is repeated or overlapped to give the desired features.

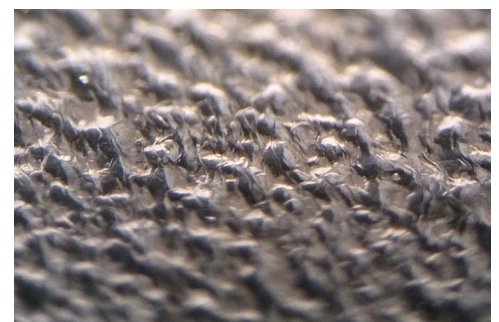
A gallery of applications can be found on the reverse.



Ultra-coarse surface



Honeycomb surface



Ultra-light surface

Applications

Biomedical Industry: Orthopaedic Implants

Surfi-sculpt can increase bio-functionality for implants and devices – such as orthopaedic bone implants (right) – by direct processing or by treatment of moulds.

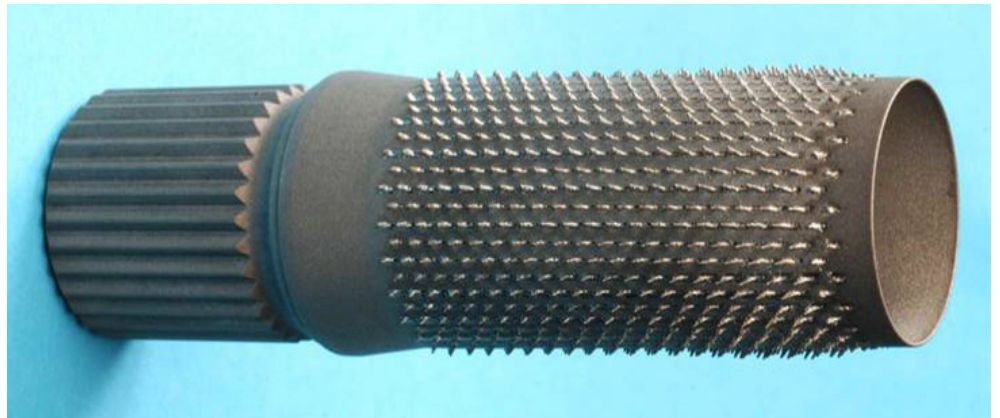
This allows for design improvements, including implant fixation, product consistency, successful integration, and more.



Manufacturing: Rotational Symmetry

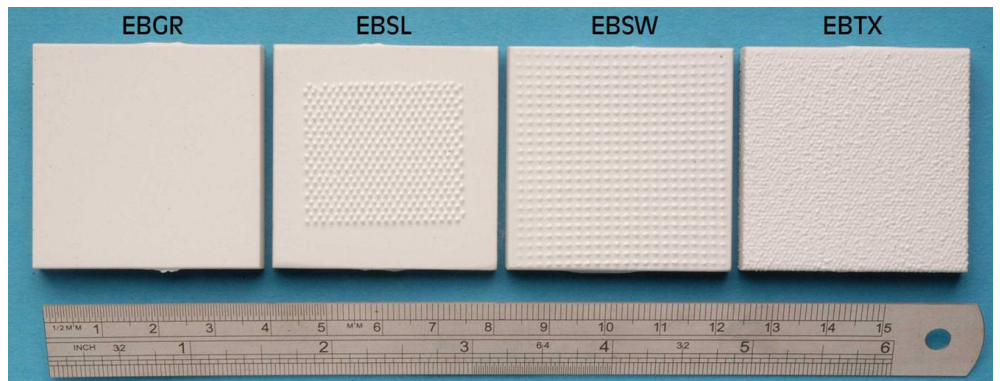
Many parts of common products, such as handles or axles, have rotational symmetry (right).

Internal or external screw threads can be added using surfi-sculpt, as well as criss-cross patterns for better grip.



Materials Science: Surface Coatings

Surfi-sculpt can manipulate surfaces to promote adhesion between a substrate and a coating (right). This could be taken advantage of in a number of industries including aerospace, medical, or automotive.



USA

Cambridge Vacuum Engineering Inc.
Unit 7 630, Silver Street
Agawam
Massachusetts
01001-0867
United States of America

+1 (413) 789 4600



UK Headquarters

Cambridge Vacuum Engineering
Pembroke Avenue
Waterbeach
Cambridge
CB25 9QX
United Kingdom

+44 (0) 1223 863481

E-mail: sales@camvaceng.com
Web: www.camvaceng.com

China

Aquasium Technology (Beijing) Co. Ltd
Suite 5, East Tower, 10th Floor
B12 Jianguomenwai Avenue
Beijing
100022
People's Republic of China

+86 (10) 512 25102

© Aquasium Technology Limited trading
as Cambridge Vacuum Engineering